



WorkFlow

Dirty Job. Clean Data.

WorkFlow –
Your digital assistant
on site



aliaxis



Our working world has changed. Underground, too.

WorkFlow is our cutting-edge system that lets you document your work directly on site. Without changing location. Without any paperwork. Without any risk. Our WorkFlow system – comprising the fusion unit, WorkFlow Mobile and WorkFlow Web – has no unnecessary gimmicks. Just security and transparency! It is easy to use and enables efficient tracking, saving time and nerves. Data is sent from the smartphone to where it belongs: the office.

**It's this easy:
Install. Click. Done.**

WorkFlow. Digital construction site management today.

There are things that were better in the past. And there are things that are better today. One of these is the pipe-fitting process with the WorkFlow system. With the smart combination of mobile app, web interface and secure cloud, all data from your Bluetooth enabled fusion units is managed in real time. WorkFlow Mobile and WorkFlow Web run on our cloud architecture – 24x7 lightning fast via SSL secure data connections to our high-performance servers. These are equipped with latest generation processors. Powerful technology for the construction site that also makes no compromises on security in the cloud – thanks to internationally recognised ISO/IEC 27001 certification.

Simpler. More secure. WorkFlow.

Documentation is created and updated during the fusion and pipe installation work, with automatic protocol generation – that's what we mean by simpler. No more time wasted sifting through paper and gathering data. Thanks to digital tracking, every step of the installation process is traceable – bringing better control and greater security. If a problem does occur, it can be located quickly. The stress of searching for the source is a thing of the past. Find out more about the compelling benefits of WorkFlow on the following pages.



WorkFlow



Aliaxis. We make life flow.

WorkFlow is brought to you by Aliaxis. A company that connects people to water and energy, securing a better future. As a leading international supplier of high tech above- and underground plastic pipeline systems and industrial and agricultural applications, Aliaxis provides people all over the world with sustainable, innovative and highly efficient solutions for water and energy. Approximately 14,000 employees worldwide contribute their technical expertise and market knowledge to develop targeted solutions that meet the highest expectations of our customers around the globe. Represented with leading local brands in more than 40 countries, Aliaxis combines local solutions with global innovation and operational excellence at every location.

More security and control. For cities and municipalities.

For city and municipal construction projects, the ability to track every work step means everything in terms of security and control. Thanks to the WorkFlow digital assistant, both are guaranteed – with no ifs or buts, and no time-consuming requests for information. Data is available to everyone in the administration at all times, prepared in the way you want and need it. Without you having to do anything.



// WorkFlow in one word? Simplification! Because it makes our job so much easier. I was sceptical at first, but we were already impressed during the test phase. Fusion protocols are created automatically and are immediately available 1:1 online in the cloud. I can be sure that no protocol goes “missing” on the way to my office, plus we are always covered if a problem occurs. Features like photo documentation, the comment function and insights at any time into what was installed where, when and by whom are a great benefit. If all our partner **//** companies used WorkFlow, it would be perfect.

Stefan Sacher, gas + water pipe network supervisor and welding specialist for steel + PE, Regionetz GmbH



// We have been using WorkFlow for a year now. We were taken by its documentation capabilities, simplicity, and the fact that it is all digital. We live in the age of digitalisation and it makes things much easier for us. We have access to all the data we need at the touch of a button, and can easily integrate it into our applications. There is no more need for bits of paper, note-making or pens. At the moment we are using WorkFlow on all renovation sites, but we are planning to use it in other areas as well in the future, such as network extensions or new domestic service connections. I am so impressed that I never go to a construction site without my FRIAMAT 7 prime. **//**

Andreas Scheffczyk, pipeline fitter, Stadtwerke Weinheim

Benefits for you at a glance:



Traceability of all work activities – step by step and down to the last detail



Greater transparency – thanks to digital protocols and real-time access to data



Significantly minimised risks – due to fewer documentation errors



Secure data transmission – using SSL encryption



Certified to the strictest standards – high-performance servers in European data centres

Talk to us!

How does WorkFlow facilitate digital transformation in cities and municipalities?

Our experts will be happy to advise you:

workflow@aliaxis.com



More efficiency and transparency. For the construction industry.

Smart construction sites save time and minimise mistakes – or better still, prevent them altogether. This is possible with WorkFlow, a digital and mobile assistant developed for precisely this purpose. With a reliable overview of all work steps. And best of all, it saves on labour. If there aren't enough helping hands on the construction site, with WorkFlow you only need your own.



// We very much liked the idea of simplifying our work processes. WorkFlow enables proper documentation in one place – it is easy for everyone to use and understand. In my opinion, anything that assists documentation is useful. We benefit from absolute transparency on all of our sites. In that sense, it is a safeguard. For the person who carries out the work, and for the supervisor. But also for the utility provider, who receives precise documentation from us. A real competitive advantage without a huge investment!

Milan Fadel, site manager pipeline construction,
Küppers GmbH



// We have been using WorkFlow for three months and it has fully met all our expectations. All the paperwork is gone. We no longer take notes by hand on site. WorkFlow handles the protocols for us. We are open to the advantages of digitalisation – and of course that includes fusion protocols, too. Now we no longer have to do time-consuming extra tasks.

Marinko Kovacevic, construction site manager, Lube & Krings





Benefits for you at a glance:



Traceability of all work activities – step by step and down to the last detail



Simplified on-site installation – saves time and money



Greater transparency – thanks to digital protocols and real-time access to data



Automated protocol generation – for less administrative work



Better damage limitation – thanks to control over every work step

Talk to us!

How does WorkFlow facilitate digital transformation in the construction industry?

Our experts will be happy to advise you:

workflow@alixis.com

2x 511,000 km

The drinking water pipeline network in Austria is almost 80,000 km long. That is enough to circle the earth twice.

How long is the gas network, if you add up all the pipelines? Very long. If you laid out all the pipes end-to-end, Germany's gas network alone could encircle the equator almost 13 times. In figures, that's 511,000 kilometres – or 1.3 times the distance between the moon and the earth.



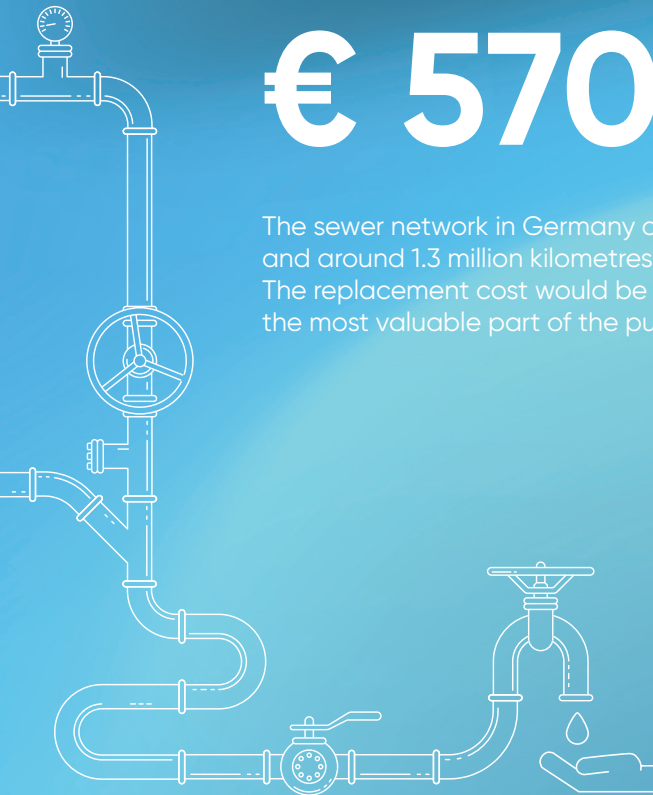
€ 570 bn

The sewer network in Germany comprises about 540,000 kilometres of pipelines and around 1.3 million kilometres of drainage pipes on private property. The replacement cost would be around 570 billion euros – making it probably the most valuable part of the public infrastructure.



126 bn m³

According to a recent study by the International Water Association (IWA), about 346 million cubic metres per day or 126 billion cubic metres per year are lost in water distribution systems worldwide on the way to the consumer.





10-15%

Like a road or a building facade, our pipelines also have an "expiry date": their lifespan is usually between 50 and 80 years. Studies show that ten to 15 percent of the pipeline network will have to be renewed in the coming years. If this is not done in time, there is a risk of increased damage and operational disruptions as well as possible contamination of the soil and groundwater. This can lead to high costs.

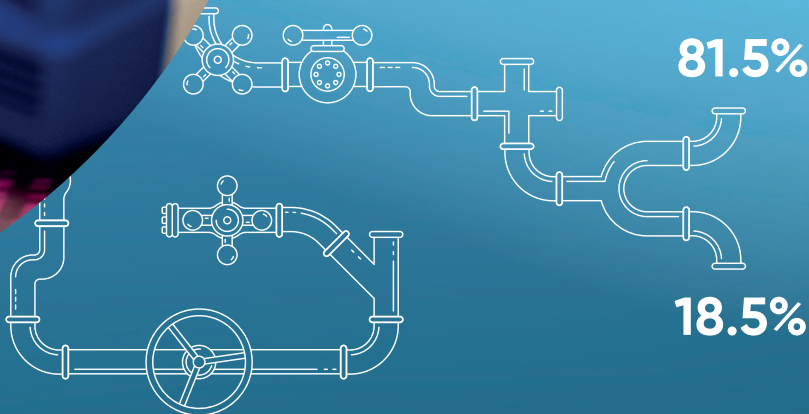
20,000 m³

Every night, approximately 20,000 cubic metres of drinking water are pumped from the lake waterworks on Lake Constance to St. Gallen. If the water was transported by a 40-ton lorry, it would have to make the journey 500 times.



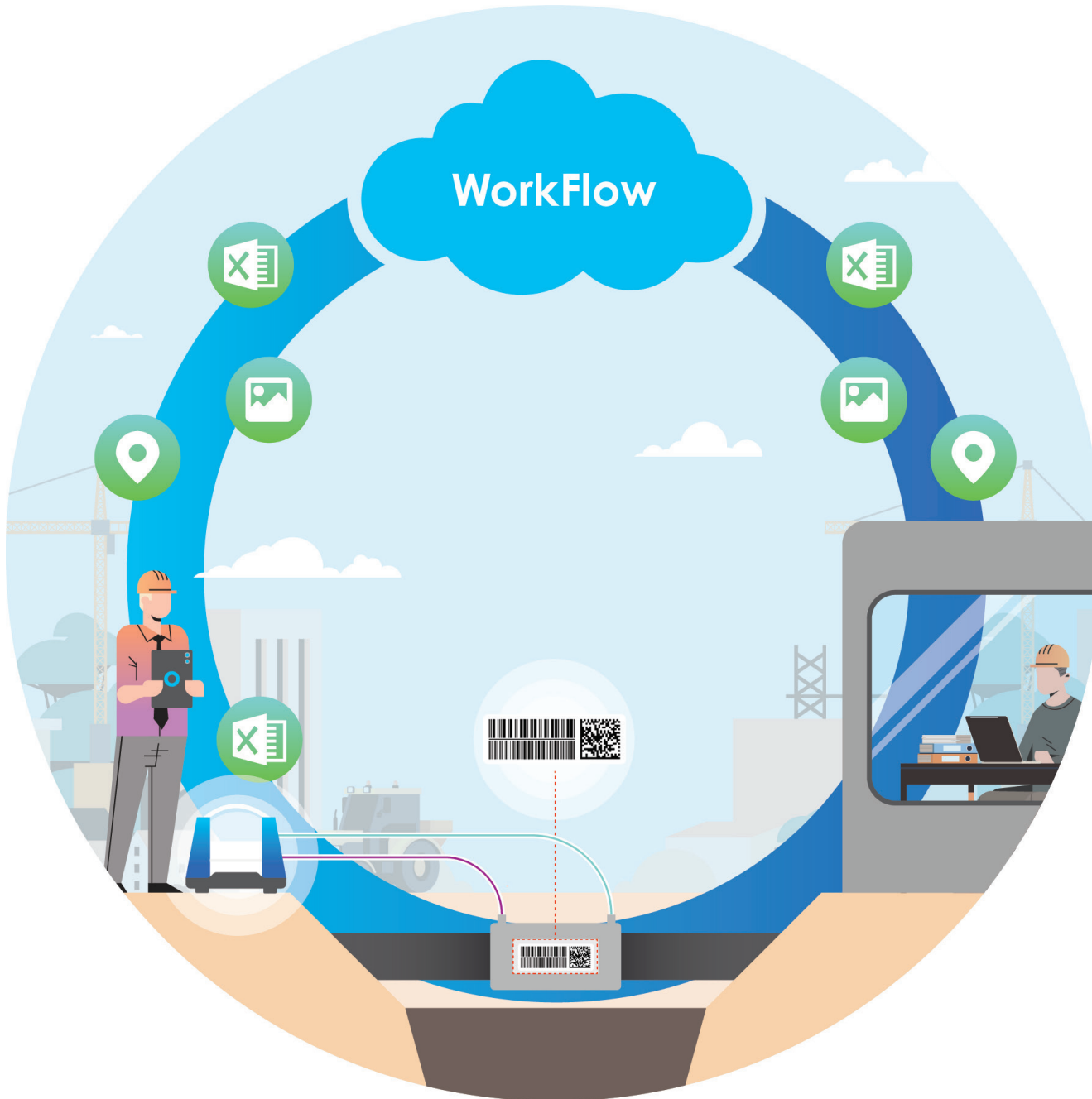
B+HH+M+K

Due to ageing water pipes, every day in Germany a volume of water seeps into the ground from defective pipes that is equivalent to the entire daily consumption of Berlin, Hamburg, Munich and Cologne combined.



4.7 bn m³

Around 4.7 billion cubic metres of drinking water flow through the pipe network from German waterworks every year – 81.5% to private homes, 18.5% to commercial and industrial users.



Everything in sight. Everything under control.

A separate report for each fusion process in the pipeline network with its own fusion protocol, adding, printing and distributing documents, photos and geodata, information on components and map views individually - and all this on endless sheets of paper. Not anymore! Because the smart digital solution manages it for you.

WorkFlow works – and this is how:



Fusion

Scrape, clean, install the component, scan the barcode, fuse – so far the same. With WorkFlow Mobile support, important information is added to the fusion protocol during the fusion process, e.g. GPS data to record the component's location, or photos to document its proper installation.



Synchronise

Paperless, in real time, with secure encryption: WorkFlow Mobile transfers all data to the WorkFlow cloud, where the data is immediately sorted, processed and stored. The corresponding protocols can be accessed anytime and anywhere by anyone who is authorised to do so – and by no-one else.



Manage

All protocols, images, components and many other pieces of information such as the construction site where each component was installed, or which fusion unit was used – all of this can also be accessed centrally from a desk on the construction site or in the office, via WorkFlow Web. Complete records for each construction site in a separate project.

Goodbye clipboard. Hello digital construction site!



No more paper clutter

Filling out fusion protocols by hand? That's in the past. Collecting slips of paper with notes? Over. Making printouts and distributing them? Forget it! WorkFlow does it all automatically, and without time-consuming administrative tasks.



Around the clock and everywhere

All projects with every piece of information at your fingertips – fusion data, components and fittings, photos and comments as well as geodata and maps are synchronised via the cloud. 24 hours a day, 7 days a week, in real time and in WorkFlow Mobile as well as Workflow Web.



Protocol generation at the touch of a button

The Bluetooth enabled fusion unit and WorkFlow Mobile make it possible – press once and you're ready to go. All fusion operations are digitally processed and protocols can be created as csv, xls, pdf or DVS reports.



All components at a glance

Where are the components installed? With the map-based component view, you will never ask yourself this question again. Thanks to GPS data, the exact location of all components is displayed on a map.



Live tracking on the construction site

How is the installation work going? You can track construction progress in real time from the site container or from the office – without losing information or time, just as if you were right there on site.



Minimise errors

Sure, mistakes happen. But they shouldn't. WorkFlow significantly reduces the risk of documentation errors. Ensuring reliable documentation and secure control, but also less sweat on your brow.



Teamwork at its best

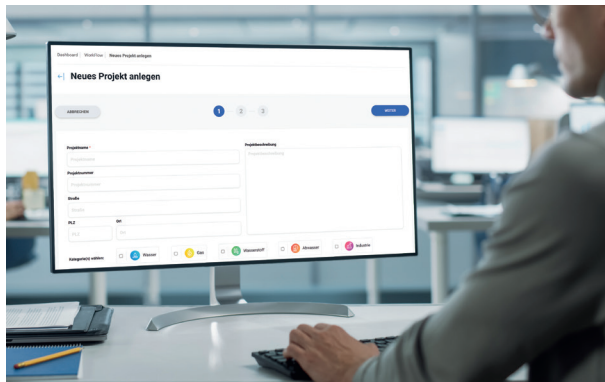
Construction sites are teamwork – which is precisely why everyone should always have an overview. With WorkFlow, the team always has the information they need. And not only the team on the site, but everyone you invite to a project. From the supervisor to the office staff to partner companies.



Security with no ifs or buts

First and foremost: all interactions between smartphone, cloud and browser are encrypted using SSL. And all data and content collected during use are and remain yours. We only use anonymised product data – such as error messages in the fusion unit – to make WorkFlow Mobile that little bit better.

It's all very simple. A quick explanation of the system



Step 1

In WorkFlow Web, construction sites are created as projects, and the personnel responsible for the site are added.



Step 2

On the construction site, workers log into the app, select the relevant project, and connect to the FRIAMAT fusion unit.





Step 3

Scrape, clean, assemble, fuse.
The smartphone is used to scan the barcode.



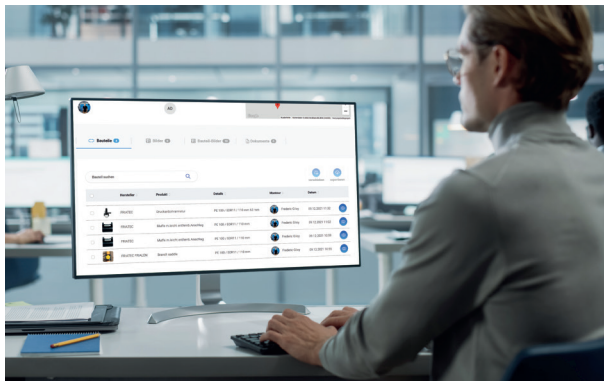
Step 4

After fusion, the operator can take photos, create comments and add them to the fusion.



Step 5

Back in the office, all installed components can be viewed and managed. The protocols can be exported.





Aliaxis Deutschland GmbH
Steinzeugstraße 50
68229 Mannheim
Germany
T: +49 621 486-0 • workflow@alixis.com
www.alixis.de/en/workflow • www.alixis.de

